



KHARMA

COLLECTION



KHARMA INTERNATIONAL

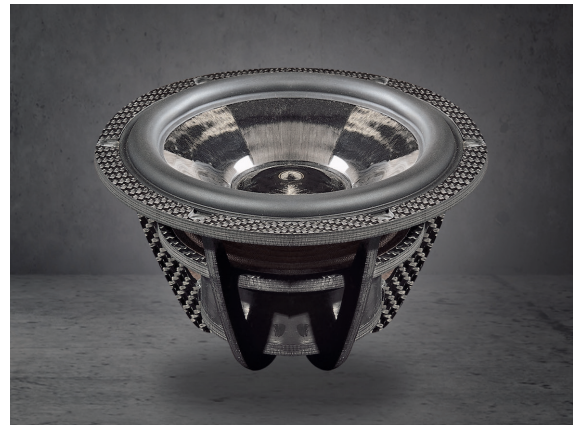
BUILDING THE BRAND

IN 1982 CHARLES VAN OOSTERUM FOUNDED THE COMPANY O.L.S., WHICH APPEARS TO BE THE FIRST BRUSHSTROKE ON AN EMPTY CANVAS THAT EVOLVED OVER TIME TO A DUTCH MASTERPIECE. DURING THE ON-GOING STRIVE TO CREATE THE ULTIMATE AUDIO EXPERIENCE, THE KHARMA BRAND WAS ESTABLISHED IN 1993.

THE NAME KHARMA IS DERIVED FROM THE WISDOM THAT ALL POSITIVE ENERGY YOU PUT INTO THE WORLD, WILL EVENTUALLY COME BACK TO YOU. IT'S LIKE ONE OF NEWTON'S LAWS OF PHYSICS, EVERY ACTION HAS ITS EQUAL AND OPPOSITE REACTION. WITH THIS IN MIND WE DESIGN, ENGINEER AND PRODUCE KHARMA PRODUCTS EVERY DAY.

A PERFECT SOUND REPRESENTATION IN A LUXURIOUS DESIGN WITH FAR-REACHING ATTENTION TO DETAIL AND TECHNOLOGY, BUILT WITH CRAFTSMANSHIP OUT OF UNIQUE MATERIALS IS WHAT CAN BE EXPECTED OF KHARMA. OVER THE YEARS KHARMA HAS ACQUIRED THIS UNIQUE REPUTATION AND STYLE, REALIZED BY A TEAM OF HIGHLY DEDICATED AND COMMITTED SPECIALISTS.

Dutch Masterpieces
HANDCRAFTED IN THE NETHERLANDS



ENIGMA VEYRON COLLECTION

LOUDSPEAKERS - ELECTRONICS - CABLES

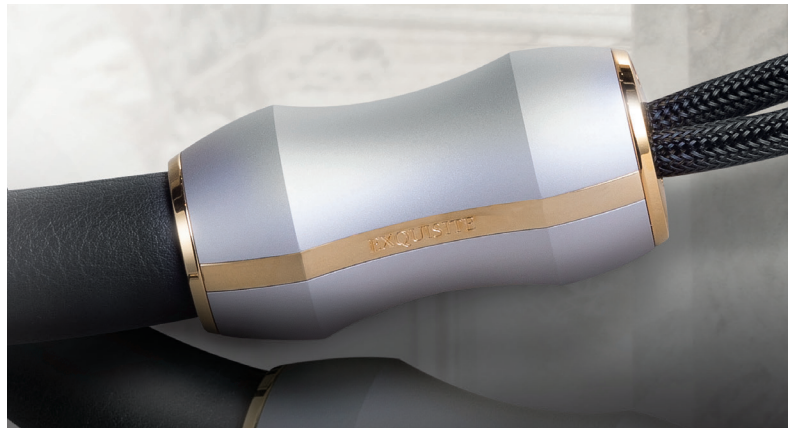
With every piece of art the creator has a palette of color flavours to choose from, to be able to evoke a feeling of true beauty. During the creation of a High-End Audio product this is not any different. Our Kharma palette consists of more than 30 years of experience, new technological insights and the best selected materials. With this generously filled palette, Kharma has created the Enigma Veyron Collection on his journey to realize the Holy Grail in the High-End Audio. To create a new level of sound quality and truly offer superior technology that would push the limits of the current dynamic loudspeakers was not an easy task.

Fully new engineered Kharma drivers are the fundament of the Enigma Veyron loudspeakers. The bass and midrange section of the Enigma Veyron loudspeakers are formed by the exclusive Kharma Omega-F Drivers. The "F" stands for 0-Foucault currents, which is a novelty in the audio world. With the combination of a 25 mm and 50 mm Diamond tweeter for the high frequencies the Enigma Veyron Collection proves it is equipped with an extraordinary set of drivers. This all results in a higher resolution, more micro and

macro-dynamics, faster transients, a more richer spectrum of tonal variations from the music itself and more natural, explosive and realistic sound.

To achieve the detailed beauty in a piece of art, the boundary conditions must also be fulfilled perfectly. The placement in the room and the framework have to be perfectly balanced. Therefore the Enigma Veyron Collection does not only include extraordinary loudspeakers, but also offers the electronics and cables to realize the complete picture.

The finish of the Enigma Veyron Cable Collection is pure craftsmanship. Including the finest dark-brown embroidered genuine leather with dark-brown anodized aluminium end-parts and Rosé Gold trimming. The details for technology and pure sound representation are shown by the new Kharma Advanced Core Treatment 2.0, where special care is taken for each conductor separately. The delicacy, devotion and passion to detail of these artisanal made cables lead to enormous dynamics, infinite resolution, a natural timbre and a transparent holographic soundstage for this entire Cable Collection.



EXQUISITE COLLECTION

LOUDSPEAKERS - ELECTRONICS - CABLES

The Exquisite Collection is a piece of art in every way, from the use of perfect materials to construction and finish. The combination of advanced Diamond dome technology for the tweeters and the Kharma Omega driver with ultra-stiff carbon fibres for the midrange emphasizes this incredible attention to detail even more.

The Exquisite loudspeakers can achieve astonishing musicality by using complex crossover techniques, which can be seen as the beating heart of the loudspeakers. Kharma has mastered the art of retaining musical wholeness with the proprietary crossover technique used in the Exquisite series.

The Exquisite Collection represents a musical wholeness, where acoustic sizes really match. A small and fragile piano note will sound like the original and will give the same feeling of that special and pure moment. But so will the big Orchestra sound as impressive as during the concert performance. This special musical wholeness is presented with the utmost ease at every playing level.

The Kharma Exquisite amplifiers are pure solid state amplifiers with a zero compromise approach. Its design features and techniques rival even the most sophisticated high-end tube and solid state amplifier designs. We have gone where no solid state design has gone before. This is, among other things, illustrated by the pure silver wired power transformers in the AC power circuit, that lift the level of sound purification to incredible heights. A result is the unequivocal palpability of its sound space, the colourful textures of its music dynamics and the absolutely phenomenal feeling of presence, which have to be heard and experienced to be believed.

The Exquisite Cable Collection uses a combination of Silver anodized parts with Gold trimming details. The cable sleeves are made from genuine black leather to bring a new level of craftsmanship. Their internal damping coefficient makes leather a good vibration reducing material in combination with the vibration reducing tubing used. This all adds up to keep mechanical disturbances away from the hybrid Silver- and Nano-Carbon conductors (SNC™) structure for this Cable Collection.



ELEGANCE COLLECTION

LOUDSPEAKERS - CABLES

The Elegance collection has a modern appeal, but at the same time a heritage that goes back for almost 20 years. The Ceramique line was the successful predecessor of the Elegance collection. Although the shape of the cabinets has been unchanged, the beauty of the design has been improved in many ways and the audiophile performance is significantly increased. New technological insights changed the use of the characteristic Ceramique drivers to the use of the Kharma Composite Drivers with carbon fibre. The effect of this innovation combined with the pure Beryllium tweeter is very clearly audible in every listening session. Combined with an impeccable surface finish, anodized aluminium trimmings and subtle chrome accents makes the Elegance collection ready to define a new standard for the coming decade.

All loudspeaker models in the Elegance line can be finished in a Signature version, which is a significant audible upgrade. For the midrange section, the Kharma Composite Driver is interchanged with the Kharma Omega-7 driver. This Omega-7 driver is based on Ultra High Modulus carbon fibres, which is the best fibre available.

The use of these ultra-stiff carbon fibres and a unique resin, together with a proprietary production process, displaces the break-up frequencies of the cone, in comparison with the Kharma Composite driver, to an even more refined level of excellence. Moreover, the pure silver internal wiring is enhanced by increasing the cross-sectional conductive area and the acoustical damping is enhanced to absorb all energy in a wide frequency range. Besides the internal wiring and the acoustical damping a vibration-reducing compound is used to bring mechanical vibrations to an absolute minimum.

Within the Elegance Cable Collection the purest form of the hybrid Silver- and Nano-Carbon conductors (SNC™) are used. The elegant cables contain the same individually chambered conductor structure as in all three Cable Collections, but are executed in an optimum price versus quality ratio. Just as in the Elegance Speaker Collection, the finish of the Elegance Cable Collection is based on a combination of black anodized aluminium parts and chromed trimming details. In this way the Elegance Cable Collection matches the Elegance Speaker Collection both audible as aesthetically.



Kharma International b.v.
Kalshoven 7 4825 AL Breda
The Netherlands
www.kharma.com